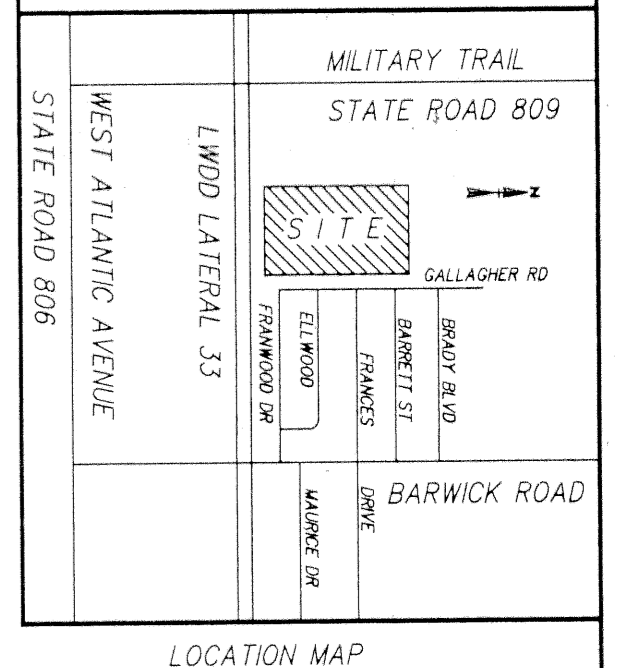
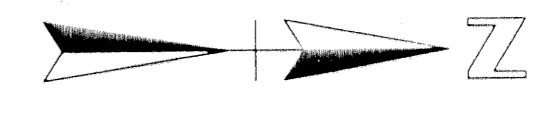
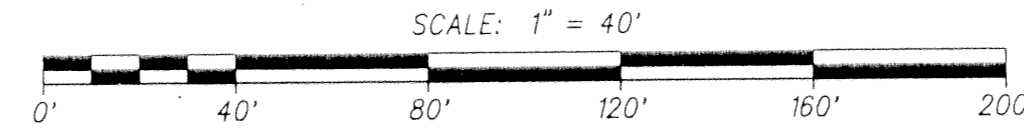
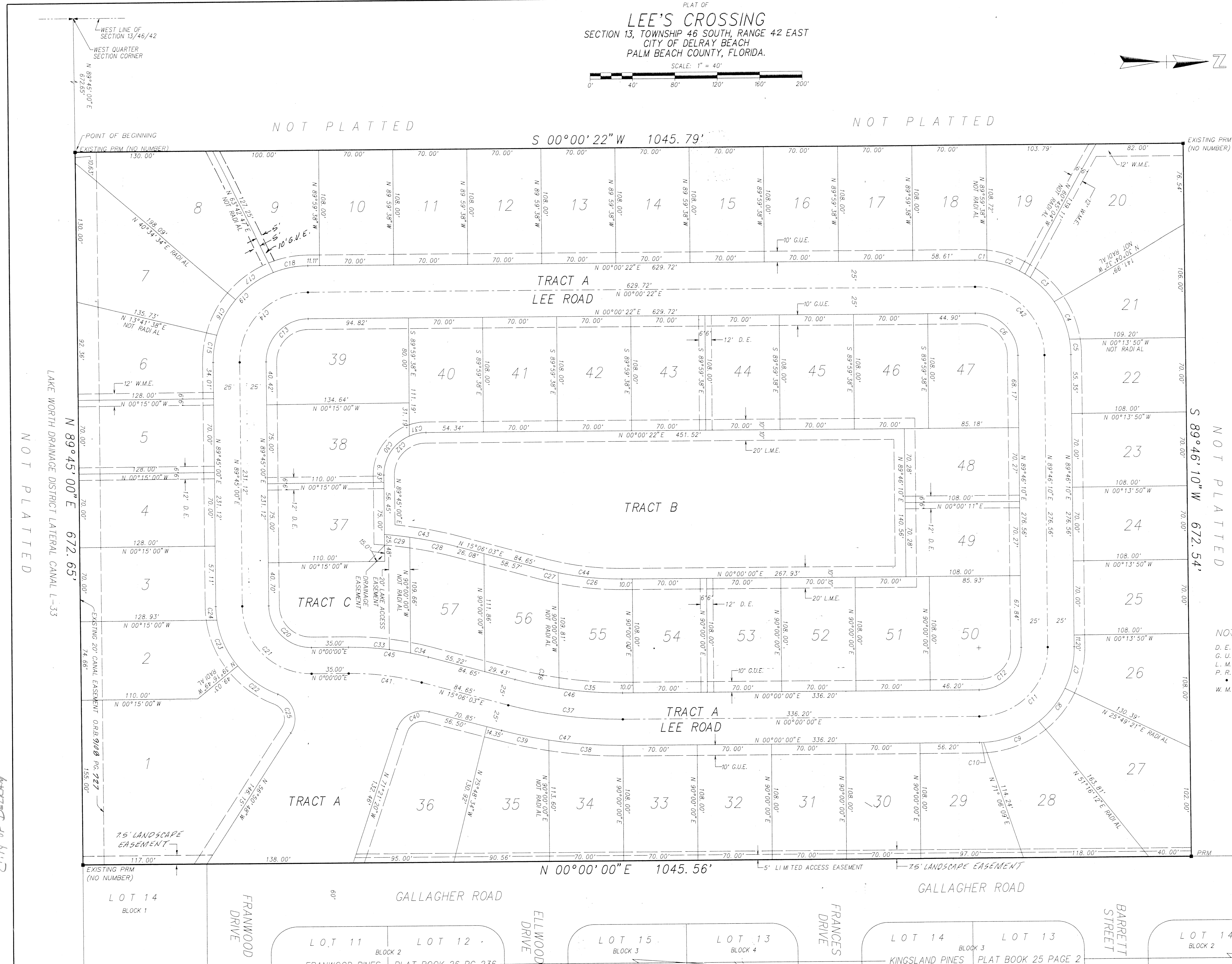


PLAT OF
LEE'S CROSSING
 SECTION 13, TOWNSHIP 46 SOUTH, RANGE 42 EAST
 CITY OF DELRAY BEACH
 PALM BEACH COUNTY, FLORIDA.



NOTES:
 D. E. DRAINAGE EASEMENT
 G. U. E. GENERAL UTILITY EASEMENT
 L. M. E. LAKE MAINTENANCE EASEMENT
 P. R. M. PERMANENT REFERENCE MONUMENT
 • PERMANENT CONTROL POINT
 W. M. E. WATER MAIN EASEMENT



SUBDIVISION * LEE'S CROSSING
 BOOK 76
 PAGE 177
 FLOOD MAP #
 ZONING
 ZIP CODE
 PUD NAME LEE'S CROSSING
 CITY OF DELRAY BEACH